



BG02/5-7 Telegraph Road Pymble, NSW

 2  2  2

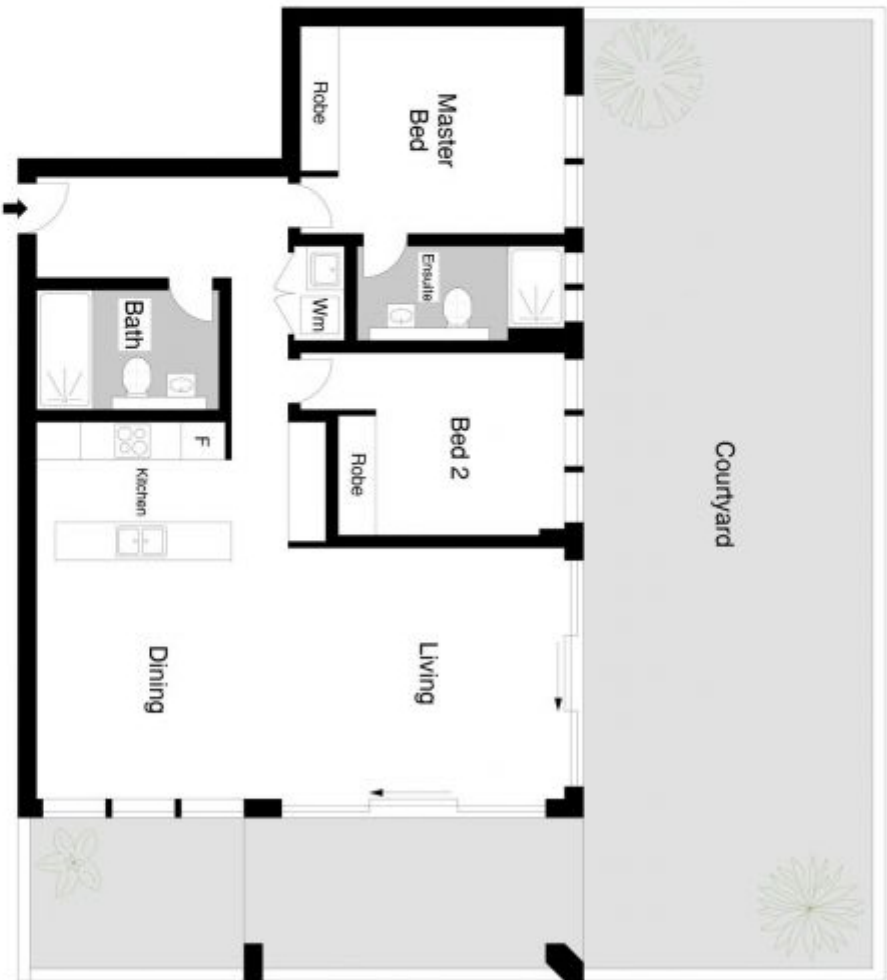
Ultra spacious brand new luxury two bedroom apartment ? Only 600m approx. from P

Price: Contact Agent - For Sale

This stunning brand new luxury two bedroom apartment with a total area space of 207sqm sits on the coveted quiet and sunny North East corner of the prestigious 'Adeline' complex. Situated on the East side blue ribbon street of Pymble, this contemporary design apartment features a spacious open plan living surrounded by an exceptionally large light filled garden courtyard and comes with double side-by-side car space security parking.

Nestled amid lush and leafy surrounds, this apartment offers luxurious comfort within a tr

Phil Orr
0412 99 11 33



BG02/5-7 TELEGRAPH ROAD PYMBLE

Internal : 91m²
Total Area : 207m²



Scale in meters, Pictorial only. Dimensions are approximate. All information contained herein is gathered from sources we believe to be reliable. However we cannot guarantee its accuracy and interested persons should rely on their own enquiries. www.rslpropco.com.au