



46 Bungalow Avenue Pymble, NSW

 5  3  2

## Stunning family home, premier pocket

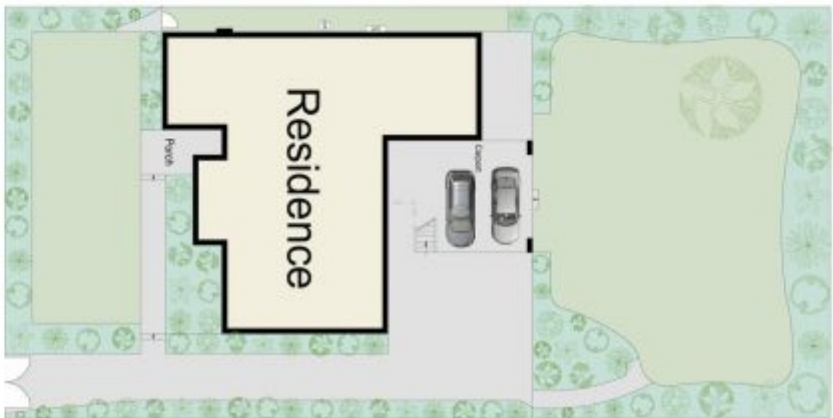
Merging an exceptional floorplan with a fantastic walk-to-rail location, this substantial family home promises a relaxed lifestyle of comfort, convenience and versatility. Resting on an expansive 1,052sqm block with north facing alfresco spaces, its interiors are stylish and contemporary complete with a separate family room and guest retreat.

- Set amongst manicured gardens with a big backyard
- Timber floors, high ceilings, sweeping living and dining
- Bi-folds open to connect the living with the large terrace

**Price:** Auction - For Sale

**Phil Orr**

0412 99 11 33



Site Plan (Not To Scale)

Internal : 312m<sup>2</sup>  
 Land Size : 1052m<sup>2</sup>



# 46 BUNGALOW AVENUE, PYMBLE

Scale in metres. Indicators only. Dimensions are approximate. All information contained herein is gathered from sources we believe to be reliable. However, we cannot guarantee its accuracy and interested persons should rely on their own enquiries. www.wildorchid.com.au