



22 Maytone Avenue Killara, NSW

 5  3  2

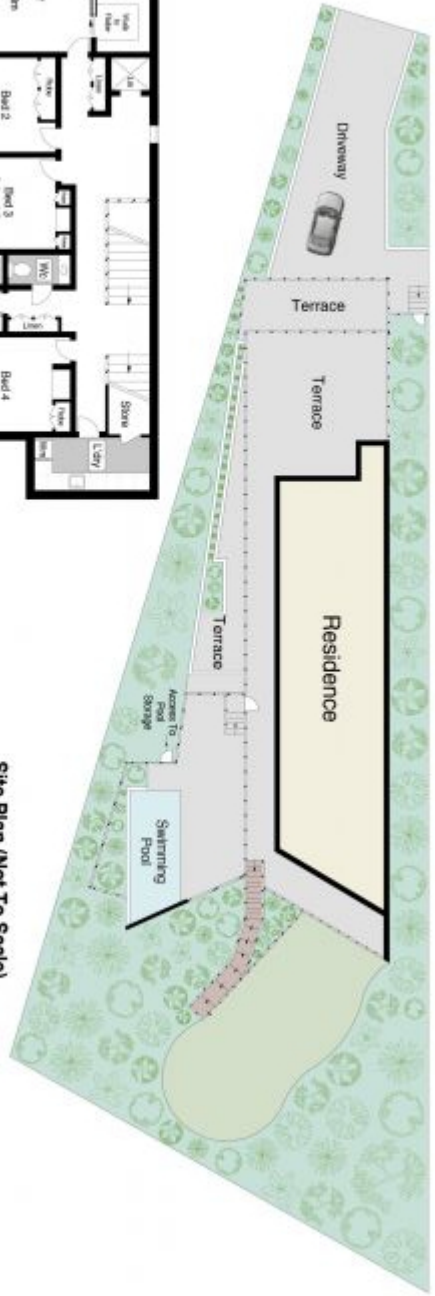
Brand new state-of-the-art home on north facing block

A seamless integration of site, sophistication and state-of-the-art design, this brand new full brick residence epitomises luxury across a north facing 1,045sqm block. The striking vision was created by architect Nalin Perera, who sought to contrast the beauty of the home's natural setting with bold contemporary lines. With a full height glass wall, the vast top floor living zone is immersed in an engaging scenic panorama, while extending to a terrace, magnesium swimming pool and level lawns. Privately tucked away at the end of a quiet cul-de-sac, this impressive home is placed within walking distance of Killara High School and Gordon and Killara Station.

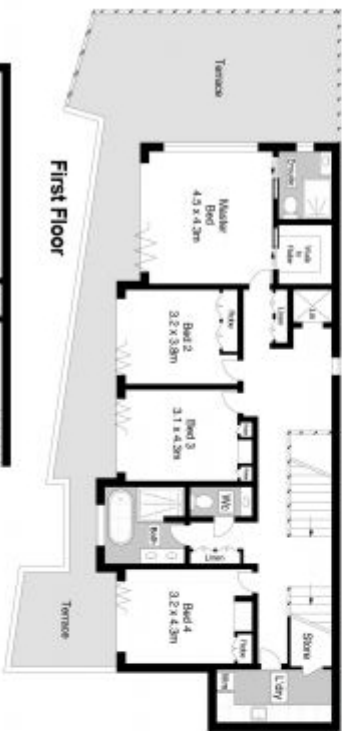
Price: Contact Agent - For Sale

Phil Orr
0412991133

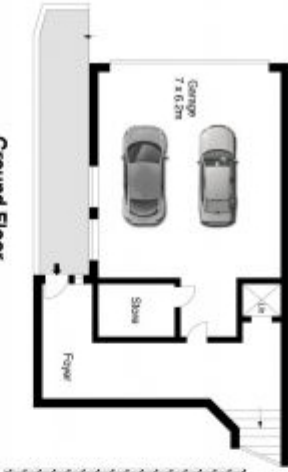
Tam Orr
0415178505



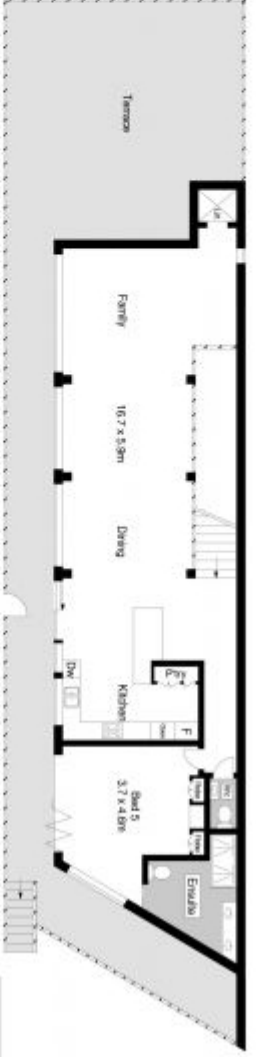
Site Plan (Not To Scale)



First Floor



Ground Floor



Second Floor

22 MAYTONE AVENUE, KILLARA

Internal : 343m²
Land Size : 1045m²



Scale in metres. Indicators only. Dimensions are approximate. All information contained herein is gathered from sources we believe to be reliable. However we cannot guarantee its accuracy and interested persons should rely on their own enquiries. www.killaraproperty.com.au