



BG07/5-7 Telegraph Road Pymble, NSW

 2  2  1

Stunning boutique two bedroom apartment

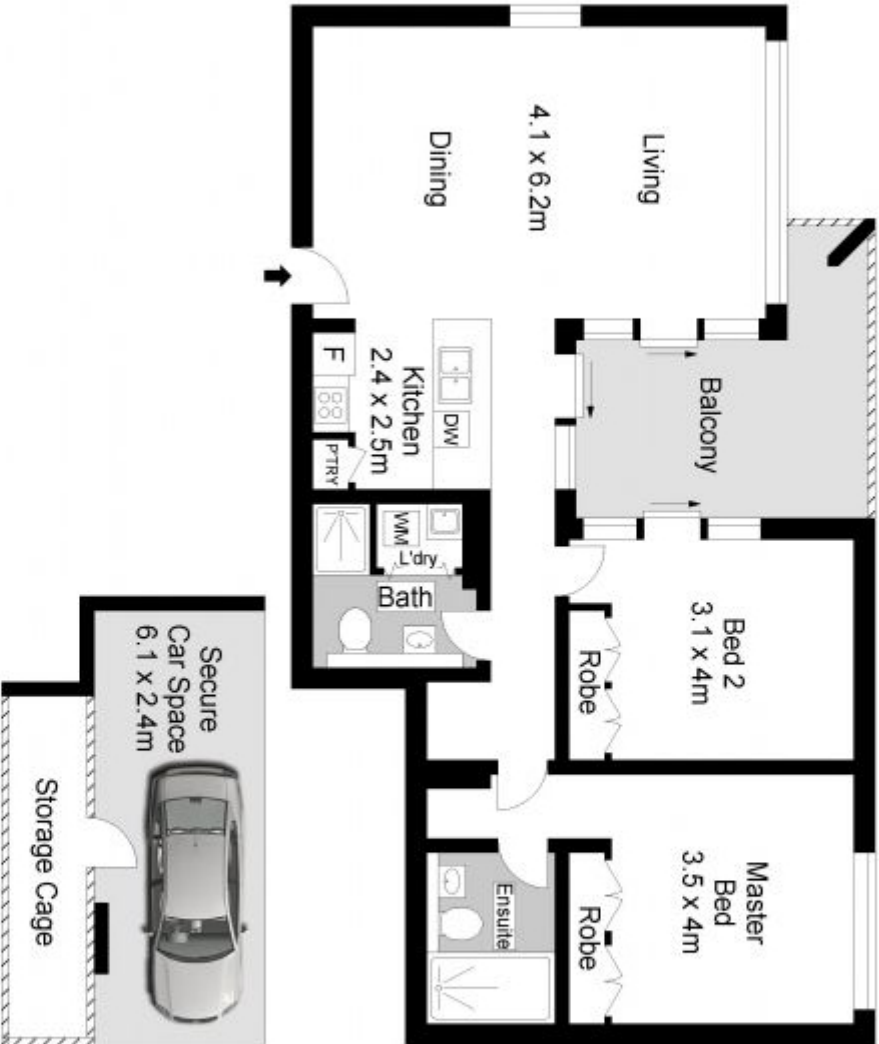
Located in an environment of tranquility and convenience, this stunning boutique two bedroom apartment is set peacefully within the 'Adeline' complex. With a total area space of 92sqm approx. on title and surrounded by leafy surrounds and natural light, this apartment offers a sense of space and luxurious style. Only 600m approx. from Pymble station and moments to local shops, parklands and elite schools

Price: UNDER CONTRACT - For Sale

- Spacious open plan design maximising indoor/outdoor flow
- Entertaining terrace and light filled courtyard

Phil Orr
0412991133

Tam Orr
0415178505



BG07/5-7 TELEGRAPH ROAD, PYMBLE

Internal : 80m²



Scale in meters. Robotic only. Dimensions are approximate. All information contained herein is gathered from sources we believe to be reliable. However we cannot guarantee its accuracy and interested persons should rely on their own enquiries. www.abcpropco.com.au