



401/3-5 Clydesdale Place Pymble, NSW

 3  2  2

## Bright and spacious three-bedroom apartment with district views

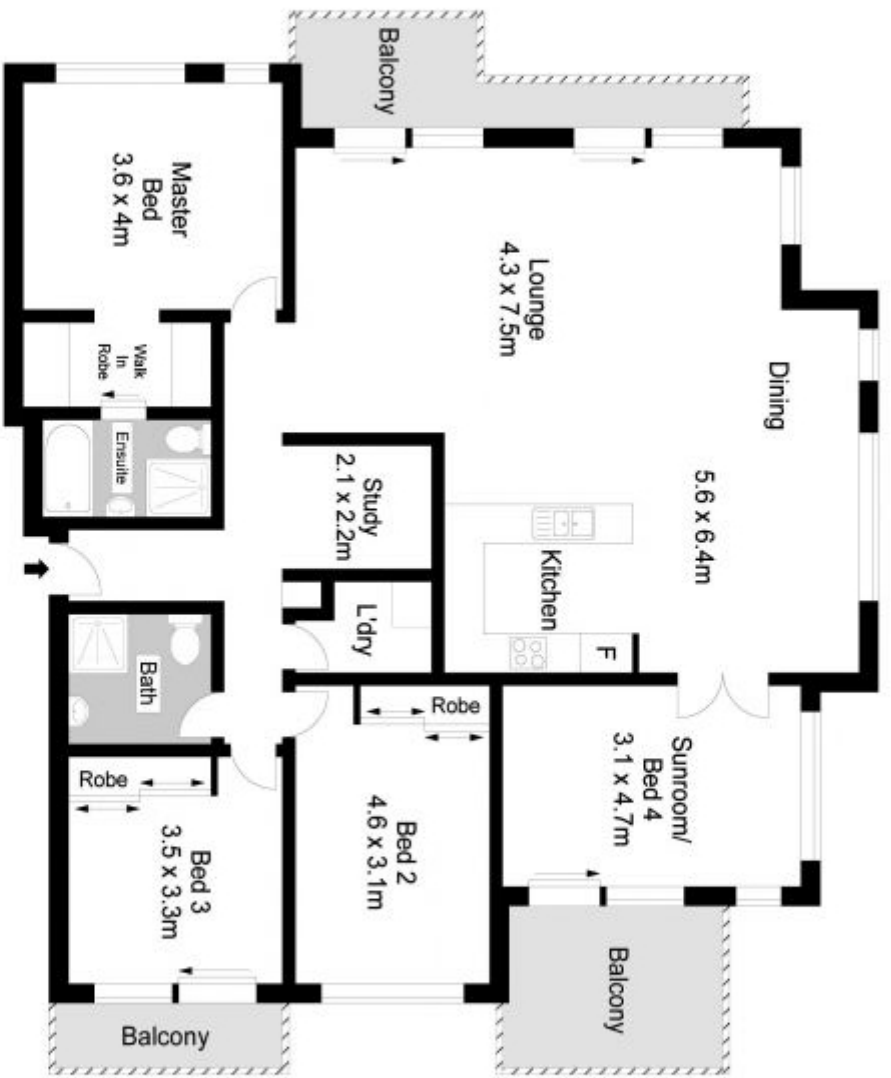
Positioned on the sub penthouse level of the popular '3 Clydesdale' building in Pymble, this modern apartment boasts an impressive 152 sqm of internal space. The large open plan design is orientated due north to leafy district views. The apartment is solidly built with full brick walls that provides a high standard of both thermal and acoustic insulation and enjoys further benefits and privacy being located at the enviable North East end of the complex.

Additional features include a dedicated study

**Price:** Contact Agent - For Sale

**Phil Orr**

0412 99 11 33



# 401/3-5 CLYDESDALE PLACE, PYMBLE

Internal : 152m<sup>2</sup>



Scale in metres, indicated as only. Dimensions are approximate. All information contained herein is gathered from sources we believe to be reliable. However we cannot guarantee its accuracy and interested persons should rely on their own enquiries. www.victorphoto.com.au