



22 Maytone Avenue Killara, NSW

 5  3  2

Brand new state-of-the-art home on north facing block

APPLY ONLINE by entering this link into your browser:
<https://t-app.com.au/orrco>

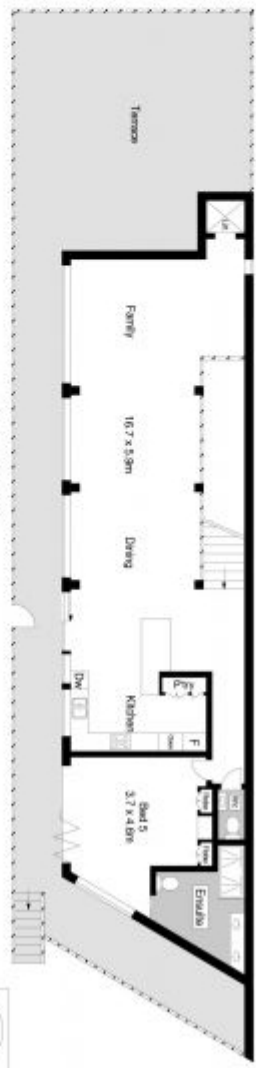
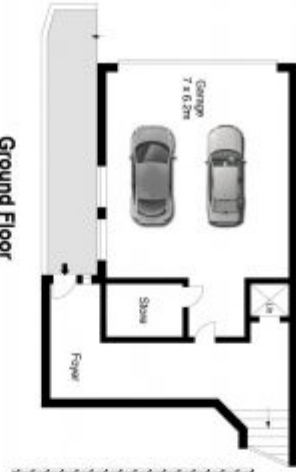
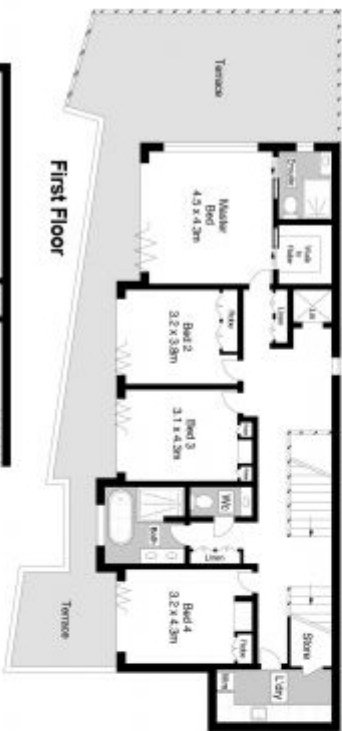
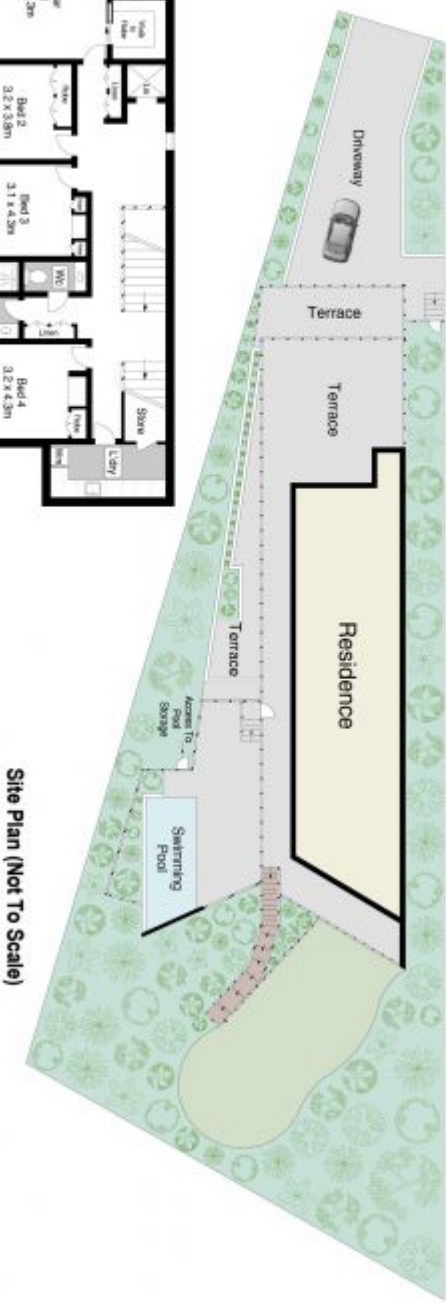
Price: \$2,200 per week -

12-month lease, Available Immediately

A seamless integration of site, sophistication and state-of-the-art design, this brand new full brick residence epitomises luxury across a north facing 1,045sqm block. The striking vision was created by architect Nalin Perera, who sought to contrast the beauty of the home's natural setting with bold contemporary lines. With a full height glass wall, the vast top floor living zone is immersed in an engaging scenic panorama, while extending to a te

Tam Orr
0415 17 85 05

Phil Orr
0412 99 11 33



22 MAYTONE AVENUE, KILLARA

Internal : 343m²
 Land Size : 1045m²



Scale in metres. Indicators only. Dimensions are approximate. All information contained herein is gathered from sources we believe to be reliable. However we cannot guarantee its accuracy and interested persons should rely on their own enquiries. www.killaraproperty.com.au