

46 Livingstone Avenue Pymble, NSW

 6  3  1

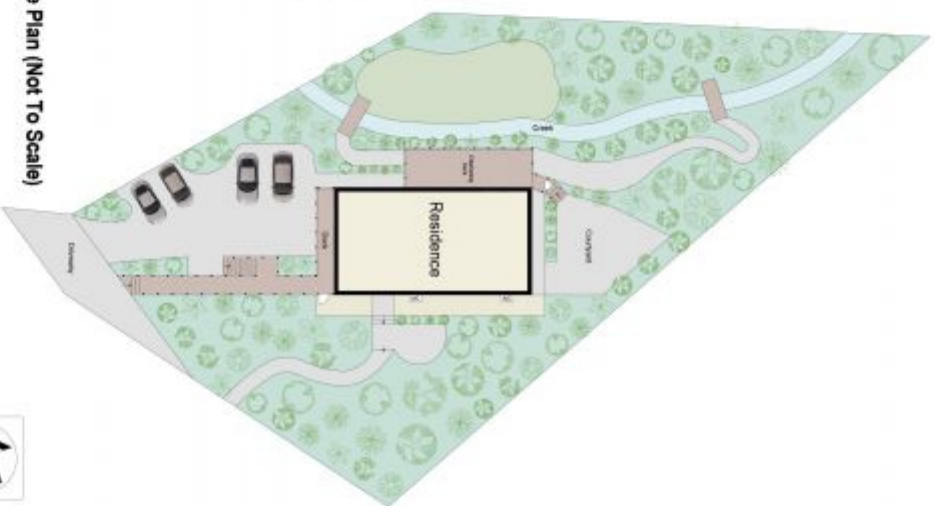
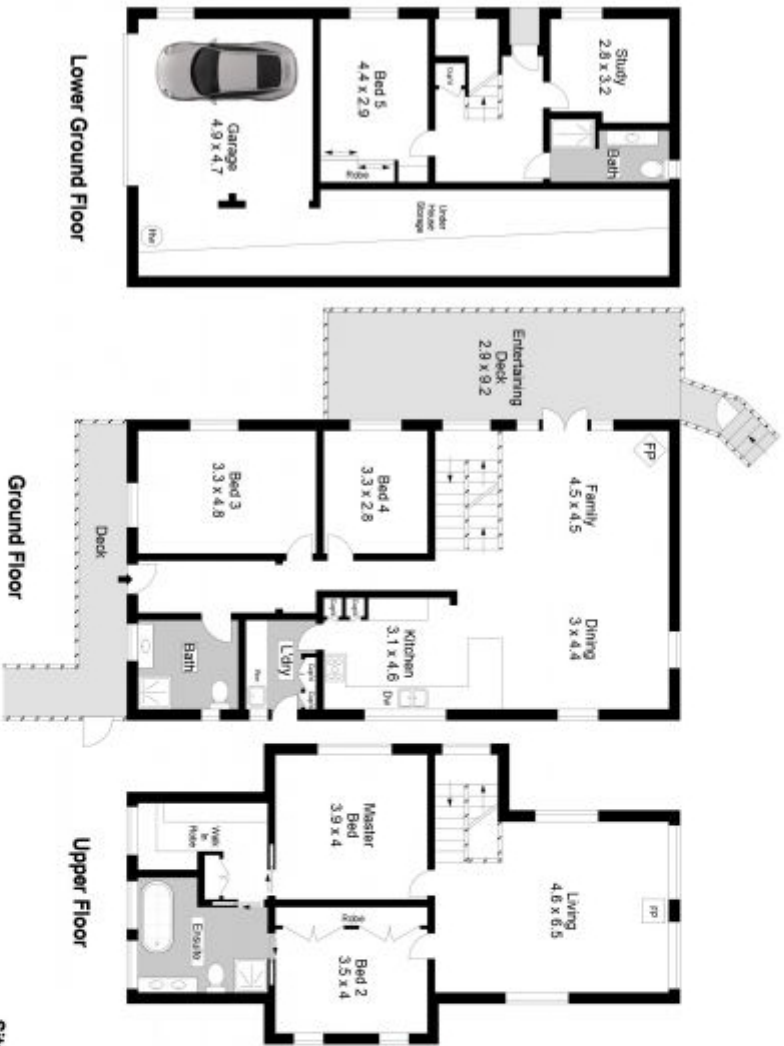
## Large family home immersed in idyllic park-like gardens

Immersed in the tranquility of enchanting 1,657sqm gardens, this renovated home provides flexibility, space and privacy for families at all stages of life. The beautiful interiors showcase exceptional quality craftsmanship awarded with a selection of premium fittings and finishes. With multiple indoor and outdoor living areas, this home offers plenty of room to grow and adapt to life's changes, while set against a backdrop of idyllic gardens for wonderful privacy. Its exclusive location is set within walking distance of Pymble Station and Pymble Ladies College, close to Kuring-Gai Fitness and Aquatic Centre, Lofberg Oval and Lane Cove National Park.

**Price:** Contact Agent - For Sale

**Phil Orr**  
0412 99 11 33

**Tam Orr**  
0415 17 85 05



## 46 LIVINGSTONE AVENUE, PYMBLE

Scale in metres, indicated as only. Dimensions are approximate. All information contained herein is gathered from sources we believe to be reliable. However, we cannot guarantee its accuracy and interested persons should rely on their own enquiries. [www.victorpro.com.au](http://www.victorpro.com.au)