



816/8 Merriwa Street Gordon, NSW

 3  2  2

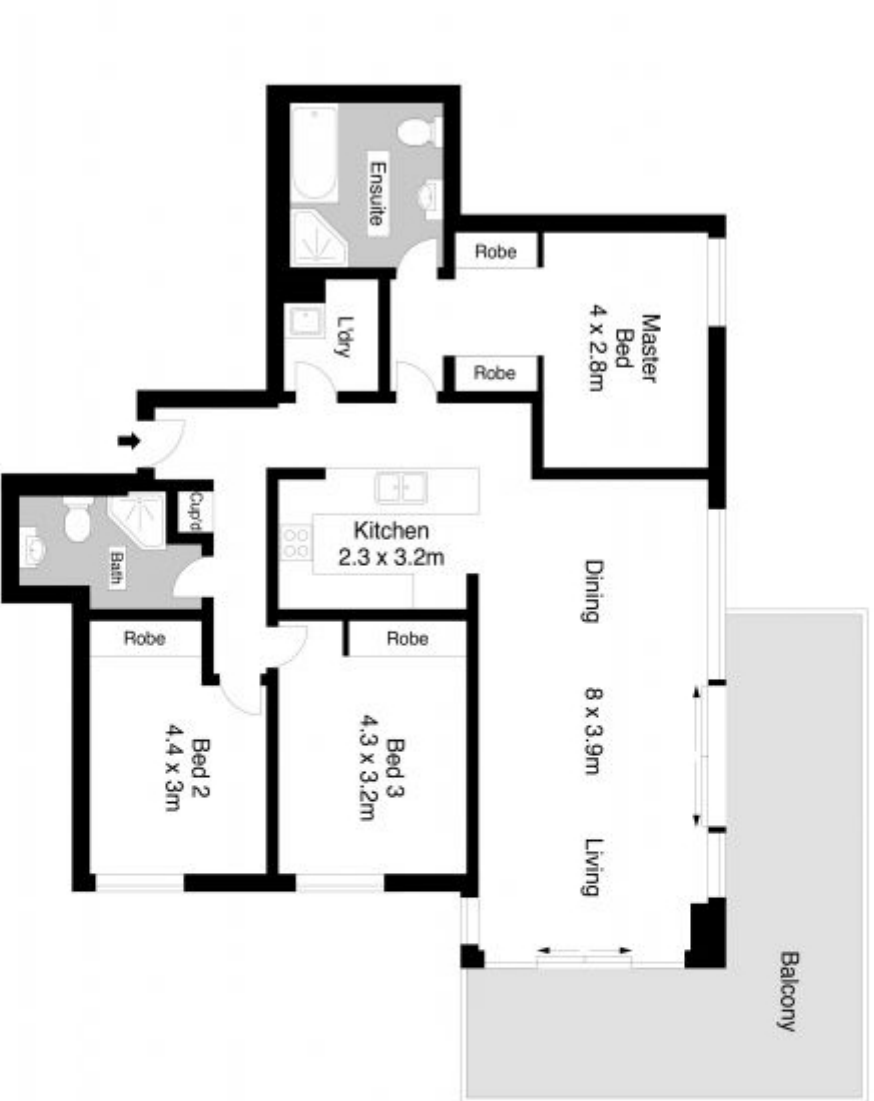
## Penthouse level apartment graced with an awe-inspiring outlook

Impressive panoramic views, this generous apartment is poised on the penthouse level atop 'Elysium'. It's a spacious, contemporary and pet-friendly home of absolute peace and privacy just footsteps to the heart of Gordon village. High shadowline ceilings and exceptional indoor/outdoor flow define open plan living and dining areas, which extend to an expansive wraparound balcony for picturesque alfresco living and entertaining. Interiors are finished with neutral décor and plenty of built-in storage, exemplified by the CaesarStone kitchen equipped with stainless steel gas appliances. Accommodation includes three double bedrooms with built-ins and air conditioning, the master bedroom opening to a fully tiled full main bathroom with separate bath and shower. Further inclusions comprise a second fully tiled bathroom, separate internal laundry room, intercom entry and lift access to a secure side by side double car park. Residents enjoy use of a common gymnasium and garden surrounds, while being just a short walk to Gordon Station, supermarkets, cafés and restaurants. Appealing to downsizers and young families a

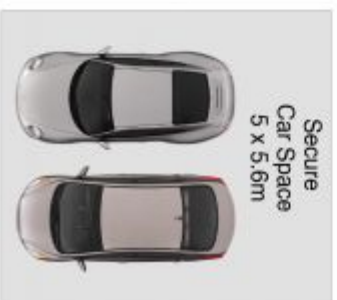
**Price:** For Sale - For Sale

**Phil Orr**  
0412991133

**Aaron Chan**  
0406057796



**816/8 MERRIWA STREET, GORDON**



Secure Car Space  
5 x 5.6m

Storage  
2.5 x 1.5m



Total Area : 171m<sup>2</sup>

Scale in metres. Robes and/or dry. Dimensions are approximate. All information contained herein is gathered from sources we believe to be reliable. However we cannot guarantee its accuracy and interested persons should rely on their own enquiries. [www.istopphoto.com.au](http://www.istopphoto.com.au)